

by **biodiversity**  
Hawke's Bay

Scan here for  
more information,  
suggested local  
hotspots and more!



*#bayinmay*

Tag to win an epic  
family adventure  
prize pack!

In collaboration with:



 @BiodiversityHB  
 @NationalAquariumNZ

Interested in volunteer and conservation work?  
Drop us a line:

Biodiversity Hawke's Bay:  
Info@biodiversityhb.nz | biodiversityhb.org

National Aquarium of New Zealand:  
education@nationalaquarium.co.nz | nationalaquarium.co.nz



**31**  
activities

to do while you're out and about  
in the Beautiful Bay this May!

Scan before you start!



### Meet a tree

Spend some time with a tree! Use your senses to discover how it feels (bark and leaves), what sounds does it make, does it have a scent?

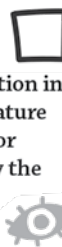


### Make a nature obstacle course

Have some fun making an obstacle course out of things in nature. Can you put things in that test your balance, your speed, how high you can jump?

### Spot 5 things

What draws your attention in nature? Find a small nature space, like a rock pool, or tree trunk, and identify the different things there.



### Make music

Find something in nature you can make music with – grass whistle, hitting sticks together, seeds or cones for rattles. Can you play a tune?



### Make a rainbow

Try to find something in nature for each colour of the rainbow. Look around in your garden or on a walk and see what you might be able to create.

### Build a hut!

Build a hut in your backyard, at the beach or at a park with driftwood you collect, and decorate with seaweed, leaves, and feathers.



### Dance with nature

Move however nature makes you feel when you are out amongst it!



### Create nature poetry

Create a nature poem while at your own nature spot, or out at one of Hawke's Bay's iconic environments.



### Listen to nature

Identify 5 different sounds you can hear.



### Have a waste-free picnic

See if you can pull off a waste-free picnic. Choose a lovely spot outside to enjoy some kai with friends and whānau.



### Skim a stone over water

What is your top score? If you are with others, who got the most 'jumps'?



### Build a mini city

What did you use to build your mini city? What lives there? What could we learn from how you built your city when planning Aotearoa's cities of the future?



### Read a night time story outside

Grab your torch, a blanket, maybe even a hot chocolate?



### Find nature in unexpected places

Find things growing in the cracks in the footpath, walls, corners – anywhere!



### Create rock art

Collect some rocks of different shapes and sizes and create sculptures, patterns or designs.



### Create a story in nature

Find a spot in nature and look carefully at what is around you and create an imaginative nature adventure story.



### Relax in nature

Find a serene spot and take a moment.



### Watch a bird

What is it doing?



### Make a fairy house

Find a large tree and make a fairy house door with things you find outside.



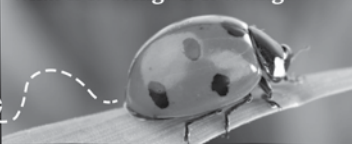
### Go star gazing

What constellations, planets etc are in the sky in May? Matariki disappears from the sky, returning in June. Visit Ātea-a-Rangi, the Star Compass, at Waitangi Regional Park near Awatoto, Napier.



### Follow an insect

Find somewhere like your backyard or a park to search for an insect. Follow it for a while; what is it doing? Is it eating?



### Texture hunt

Find different textures in nature: smooth, spiky, soft, hard, bumpy, slippery, spongy. Challenge a friend or whānau member to also find that texture!



### Play hide and seek outside



### Grow a plant from a seed

Find seeds, plant them, label them and watch them grow! Try squeezing seeds out of a tomato, chilli or capsicum.



### Bug search!

Identify invertebrates in a green space near you!



### Play the blindfold game

Find things outside with different smells or textures to feel – e.g. lavender, rosemary, manuka, dirt, lawn clippings, mud. Challenge someone to try and guess what they are while blindfolded.

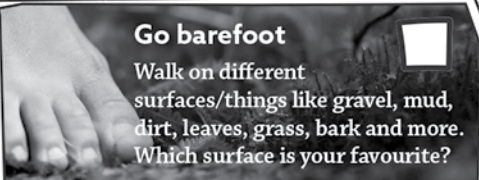


### Explore a park



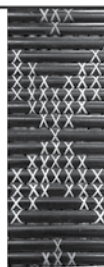
### Go barefoot

Walk on different surfaces/things like gravel, mud, dirt, leaves, grass, bark and more. Which surface is your favourite?



### Make a tukutuku pattern

Tukutuku patterns adorn the inside walls of whareniui and their symbols have special meaning to Māori. Can you use materials such as flower petals, leaves, grass, pine cones, sticks, stones, etc to make a tukutuku pattern? What meaning does this have to you?



Scan here when you're all done!