



September 2022

Hello to members and supporters,

Spring sneaks in every now and again, giving us a taste of what's to come. The godwits are arriving now. More about our 'Godwit Walk' and AGM to follow.



Photo: Derek Rossiter

Godwit Talk/Walk, Sunday 2 October, 10am

Come and hear about the journey of the Bar-tailed godwits (Kuaka) from Alaska. View them in Ahuriri Estuary. Meet at large carpark opposite the Westshore Beach Inn, (at 85 Meeanee Quay, Westshore). Our flag will be visible.



There will be a speaker about the godwits, and a guided walk to where they will be roosting. Bring binoculars or scopes. Dress for the weather, sunscreen suggested.

This year, for the first time, Napier Cathedral will ring its bells on this day as an acknowledgement of the Bar-tailed godwits (kuaka) arrival.

AGM – Ahuriri Estuary Protection Society – Saturday 8th October, 1.30pm at St Pauls Church Hall, Tennyson St, Napier.

We are still finalising our speaker to talk about current estuary protection activity and challenges the estuary faces. All welcome.

Our regular monthly Ahuriri Estuary Clean-Up sessions have

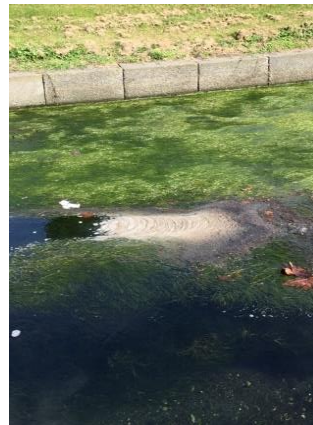


been well-attended (every second Sunday of the month, 1.30, meeting at Pandora Pond, Humber St). The weather has usually been suitable to go ahead.

Many thanks to 'regulars' and 'new-comers', for all your efforts. We fill up to 4 black sacks each month and take a bundle of items for recycling. A great job to be doing. Thank you to Sue for bringing the hot drinks.

Napier Urban Waterway Working Group (NUWWG)

We have had one introductory meeting for this group with NCC and other interested community members. Subsequent meeting was postponed indefinitely due to consultation with mana whenua. One thing we can still do is keep an eye on our local waterways, and report anything that concerns us to NCC Environmental Solutions team. Such as photos below:



What has the AEPS Committee been doing this year?

We have met with Napier City Council staff, attended public meetings, and written and presented submissions to Napier City Council at Hearings on the Dog Control Bylaw Review, the NCC Annual Plan, Trade-Waste and Wastewater Bylaw Review, and investigated the new Reserve Management Plan. Lynne and I spoke about AEPS to Taradale Residents Association in July.

A threat to the estuary water flow?

Concerns are growing about the Invasive Tube Worm that is colonising the Upper Estuary, the Taipo Stream, areas at Clive and Tukituki river-mouth, from anecdotal remarks from observant people. Here are photos taken at the Upper Ahuriri Estuary.



Photo: Lynne Anderson



Photo: Lynne Anderson

The blobs you can see on the water and across the waterway are the coral-like tube worm casing growing above the water. Is it impeding flow? Looks like it. About 3 years ago there was a mechanical digger taken to upper estuary to remove some of it, and more recently HBRC removed some near the Taipo Stream. In conversation with Anna Madarasz-Smith at one of the HBRC Kotahi drop-in sessions, she related that they are working with Cawthron Institute consultants to discuss strategies for removing the Tube Worm, including international treatments for this problem.

A little project on the side

I mentioned in the last newsletter that I was engaging with the Environmental Protection Authority (EPA) 'citizen-science' programme, 'Wai Tuwhera o te Taiao – Open Waters Aotearoa' to learn more about the health of water flowing into Ahuriri Estuary.



I have completed my first eDNA water test in a stream on Holts Farm at the back of Bayview. The results have arrived, and they are a fascinating read – all the creatures that live or have lived in and around that piece of water.

It gives a grading of the water quality, and my next task is to find out more about what it is that indicates that outcome.

Supported by HBRC and local farmer

The local councils have done dozens of these tests all around the catchment, so have all that information to guide their programmes.



eDNA test at Wairoaiti Stream

Next test I will do will be in the Georges Drive waterway near my home. Most of our Napier waterways lead to the Ahuriri Estuary.

Anyone who would like to be involved with me on this project, contact me at aeps.hb@gmail.com. Through the programme I am hoping to link up with others connected to the programme. I have contact with NCC and HBRC on their engagement with it.

Any questions or concerns about Ahuriri Estuary, do get in touch. Hope to see you at the AGM.

Angie Denby
Chairperson, Ahuriri Estuary Protection Society